

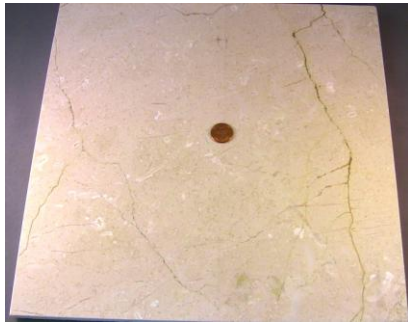
# ***Safety Direct America***

subsidiary of Sotter Engineering Corporation

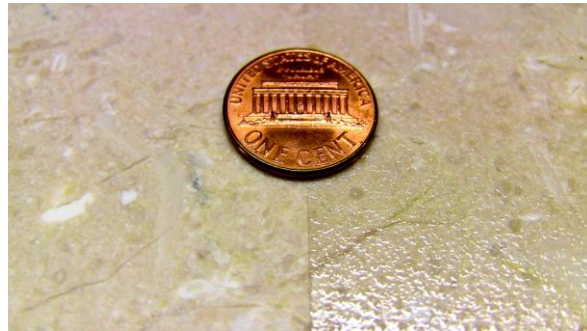
26705 Loma Verde, Mission Viejo, CA 92691-6055  
Internet: [george.sotter@SafetyDirectAmerica.com](mailto:george.sotter@SafetyDirectAmerica.com)  
Web: [www.SafetyDirectAmerica.com](http://www.SafetyDirectAmerica.com)  
Telephone/FAX: 949-582-0889

*Licensed by the State of California  
Board for Professional Engineers  
and Land Surveyors*

*Approved by City of Los Angeles  
for testing slip resistance of floors*



In diffuse light, with U.S. penny for scale; coated area is the right-hand half in each photo



Same tile in direct overhead light from fluorescent tubes

## **Two coats of our SolidStepCote 04 transparent anti-slip coating (on right-hand half of each photo) shown on Crema Marfil Spanish marble**

- Conforms to ADA, OSHA, ANSI B101.1 and B101.3 slip requirements wet and dry.
- Wet Pendulum Test Value (PTV) slip resistance suitable for pool decks, shower rooms, outdoor walkways and stairs, hospital bathrooms, etc.
- Apply with roller, foam brush, or low-pressure airless spray.
- Second coat can be applied after 15–30 minutes. Dries in 4–6 hours.
- One gallon covers 350 square feet per coat; no odor. Dries clear, colorless, glossy. Available in several different sized bottles.
- For two coats, cost as low as \$1.25 per square foot