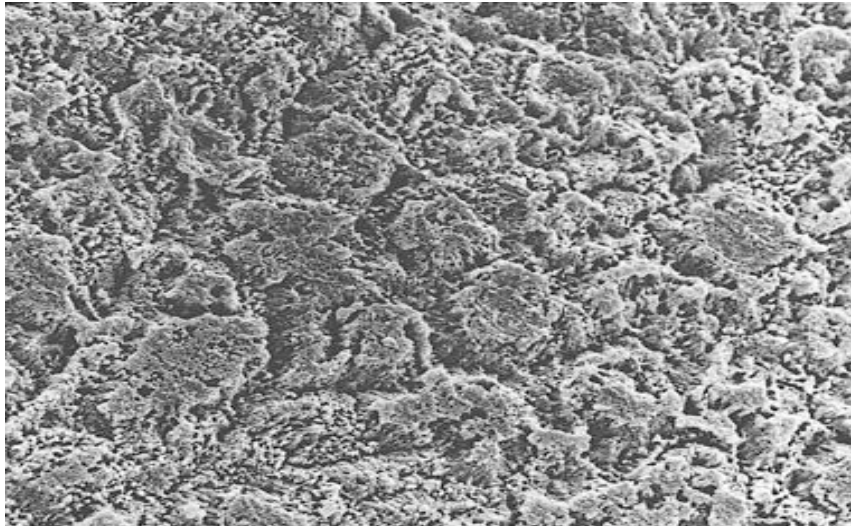
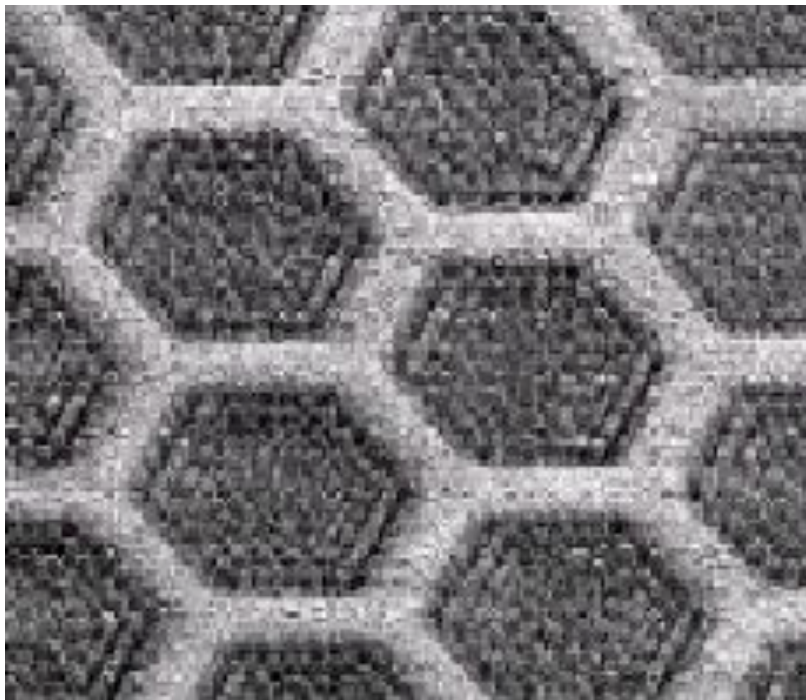


The electron microscope photos below show a surface treated with an acid etch (top) and with Non-Slip 21 (bottom). The scale is enlarged approximately 1500 times. Non-Slip 21 uses suction to increase traction. The Non-Slip 21 process deposits a polymeric matrix that does not depend on damage to the treated surface for its effectiveness.



Acid-etched ceramic tile surface



Ceramic tile treated with Non-Slip 21